

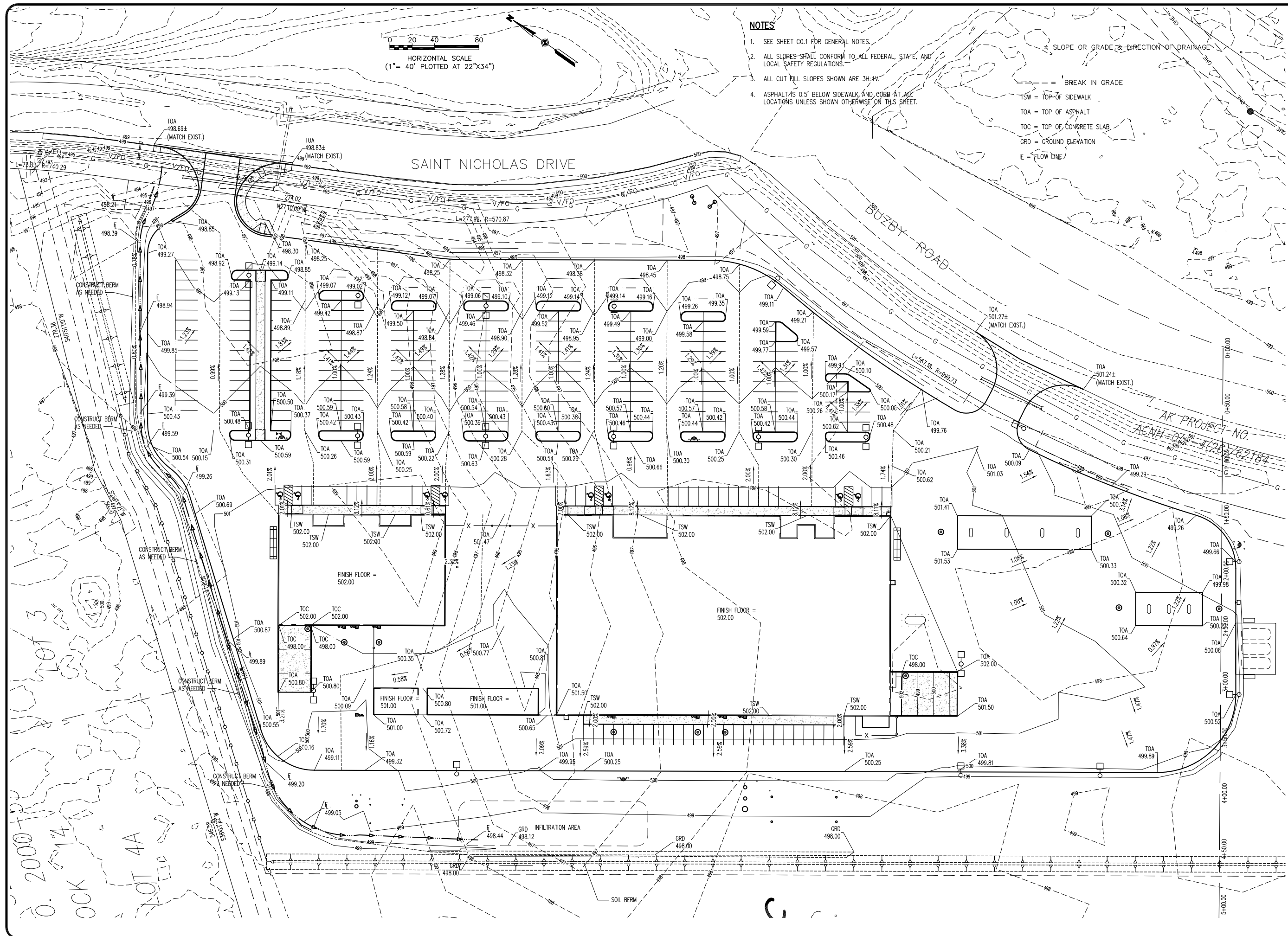
NOTES

1. SEE SHEET C0.1 FOR GENERAL NOTES.
2. ALL SLOPES SHALL CONFORM TO ALL FEDERAL, STATE, AND LOCAL SAFETY REGULATIONS.
3. ALL CUT FILL SLOPES SHOWN ARE 3H:1V.
4. ASPHALT IS 0.5' BELOW SIDEWALK AND CURB AT ALL LOCATIONS UNLESS SHOWN OTHERWISE ON THIS SHEET.

— SLOPE OR GRADE & DIRECTION OF DRAINAGE
 --- BREAK IN GRADE
 TSW = TOP OF SIDEWALK
 TOA = TOP OF ASPHALT
 TOC = TOP OF CONCRETE SLAB
 GRD = GROUND ELEVATION
 E = FLOW LINE

SAINT NICHOLAS DRIVE

BUZBY ROAD



SDCS, LLC
 STENER DESIGN & CONSTRUCTION SERVICES, LLC
 5900 W. DEWBERRY DR. PH: (907) 357-5609
 WASILLA, AK 99623 FAX: (907) 357-5608

THREE BEARS ALASKA, INC.
 NORTH POLE DEVELOPMENT
 (THREE BEARS STORE AND ACE HARDWARE)
 TRACT C BROOKSIDE PARK
 NORTH POLE, ALASKA

BY	DATE	REVISIONS

JOB NO.: 22-026
 DATE: 7/20/2023
 DRAWN: DES
 REVIEWED: DES

SHEET TITLE
 GRADING PLAN

SHEET
 C2.0