

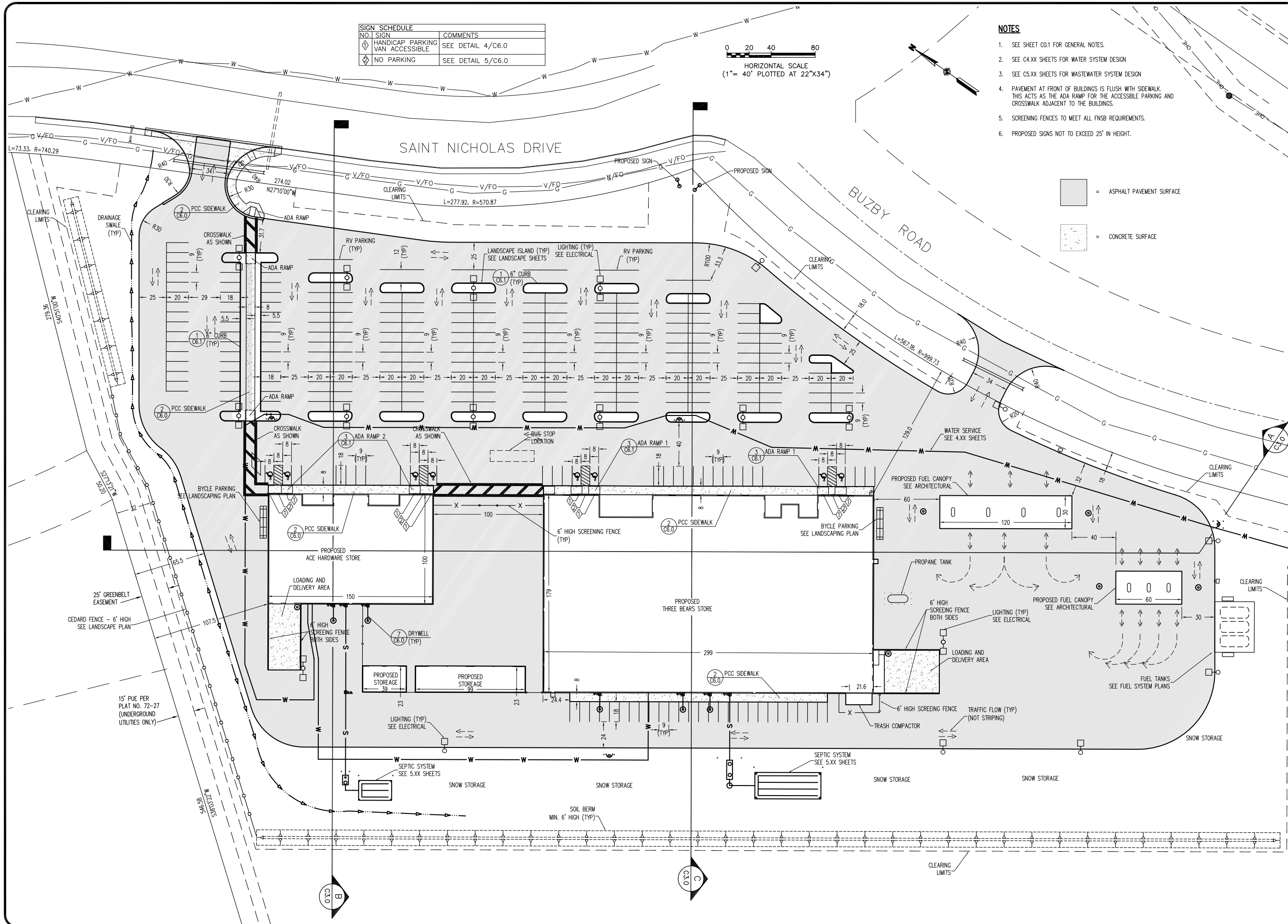
SIGN SCHEDULE	
NO. SIGN	COMMENTS
◇	HANDICAP PARKING VAN ACCESSIBLE SEE DETAIL 4/C6.0
◇	NO PARKING SEE DETAIL 5/C6.0

0 20 40 80
HORIZONTAL SCALE
(1" = 40' PLOTTED AT 22"x34")

NOTES

- SEE SHEET C0.1 FOR GENERAL NOTES.
- SEE C4.XX SHEETS FOR WATER SYSTEM DESIGN
- SEE C5.XX SHEETS FOR WASTEWATER SYSTEM DESIGN
- PAVEMENT AT FRONT OF BUILDINGS IS FLUSH WITH SIDEWALK. THIS ACTS AS THE ADA RAMP FOR THE ACCESSIBLE PARKING AND CROSSWALK ADJACENT TO THE BUILDINGS.
- SCREENING FENCES TO MEET ALL FNSB REQUIREMENTS.
- PROPOSED SIGNS NOT TO EXCEED 25' IN HEIGHT.

ASPHALT PAVEMENT SURFACE
CONCRETE SURFACE



SDCS, LLC
 STENER DESIGN & CONSTRUCTION SERVICES, LLC
 5900 W. DEWBERRY DR. PH: (907) 357-5609
 WASILLA, AK 99623 FAX: (907) 357-5608

THREE BEARS ALASKA, INC.
 NORTH POLE DEVELOPMENT
 (THREE BEARS STORE AND ACE HARDWARE)
 TRACT C BROOKSIDE PARK
 NORTH POLE, ALASKA

BY DATE	REVISIONS

JOB NO.: 22-026
 DATE: 7/20/2023
 DRAWN: DES
 REVIEWED: DES

SHEET TITLE
 SITE PLAN

SHEET
 C1.1